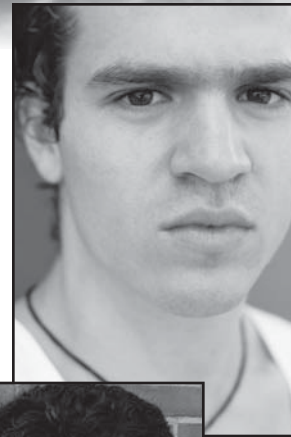


Southeast Region

Communities That Care



Program
Directory

Table of Contents

Introduction to Communities That Care.....	1
Bucks Promise for Youth and Communities.....	2
Building a Better Bensalem Today.....	3
Boyertown Area Communities That Care.....	4
Bristol Borough Community Partnership.....	5
Central Bucks Healthier Community Team.....	6
Chester County Caring Community Coalition.....	7
The Council Rock Coalition For Healthy Youth.....	8
Delaware County Communities That Care Network.....	9
Downingtown Area Communities That Care.....	10
Great Valley Community Partnership for Healthy Youth (PHY).....	11
Kennett Area Communities that Care.....	12
Neshaminy Putting Kids First.....	13
Norristown Communities That Care.....	14
Northampton County Communities That Care.....	15
Octorara Communities That Care.....	16
Pennsbury LYFT.....	17
Phoenixville Area Communities That Care.....	18
Reading Communities That Care.....	19
Slate Belt Communities That Care.....	20
Upper Bucks Healthy Communities Healthy Youth Coalition.....	21
West Chester Area Communities That Care.....	22
WISE-CTC (Warminster, Ivyland, Southampton Embracing Communities That Care).....	23
Wilson Communities That Care.....	24

Introduction to Communities That Care

Communities That Care (CTC) is a risk-focused and research-proven approach for the reduction of problem behaviors among youth. CTC works by empowering communities to gather at the grass-roots level in order to reduce problem behaviors by identifying and reducing the risk factors that are shown to lead to those problem behaviors.

Through a comprehensive process that brings members of the community together, Priority Risk Factors are identified and research-based programs are implemented to reduce those risks. Referred to as Protective Factors, these programs promote positive youth development through promoting positive individual characteristics, bonding, healthy beliefs and clear standards, and opportunities for positive community involvement. This method is proven to work through extensive research and is the core of how CTC reduces risk factors in the community.

The CTC sites listed in this directory all went through this comprehensive process to target specific risk factors in their communities. No two communities are exactly alike, and neither are the ways they work to prevent adolescent problem behaviors. That is why CTC is different. It is community specific and research-driven.

CTC in Pennsylvania started through seed grants from the Pennsylvania Commission on Crime and Delinquency (PCCD). These grants allowed the prevention boards in each community to convene, hire a community mobilizer, perform the risk and resource assessment, and begin running research-based programs.

Through the work of prevention boards across the Commonwealth, CTC has become integral to the communities in which they serve. With strong community buy-in and commitment to proven strategies CTC has become a sustainable initiative that has strengthened communities and has become the model for community mobilization and prevention efforts.

Bucks Promise for Youth and Communities

<i>Key Contact</i>	Trish Devine, Project Coordinator
<i>Address</i>	3103 Hulmeville Road, Suite 105, Bensalem, PA 19020
<i>Phone, Fax</i>	(p) 215-244-7607 (f) 215-244-7867
<i>E-mail</i>	tdevine@todayincbensalem.org
<i>Lead Agency</i>	TODAY, Inc.
<i>Meeting Times</i>	4th Wednesday every month 9:00 - 11:00 a.m. Location rotates between Bucks County I.U. #22 and The Chancellor Center
<i>Priority Risk Factors</i>	Availability of ATOD, Media Portrayals of Violence, Friends Who Engage in the Problem Behavior and Family Management Problems
<i>Mission/Vision Statement</i>	Mobilize, build and strengthen the community around our youth to enrich the quality of life in Bucks County.
<i>Description</i>	<p>Bucks Promise for Youth and Communities is a countywide consortium that utilizes the strengths of America's Promise, Communities That Care and other community-based efforts to develop and enhance assets and protective factors which promote healthy youth and communities.</p> <p>The Consortium is made up of local community coalitions and other organizations, agencies and individuals and is used very effectively to raise concerns or issues, seek information from other communities, share data and data sources and also as a forum for presentations that would be helpful to the groups throughout Bucks County.</p>

Building a Better Bensalem Together

<i>Key Contact</i>	Meghan Szafran, Project Director Shannon Hibbs, Community Mobilizer
<i>Address</i>	3103 Hulmeville Road, Suite 105, Bensalem, PA 19020
<i>Phone, Fax</i>	(p) 215-244-7607 (f) 215-244-7867
<i>E-mail</i>	mszafranb3t@buckscoalitions.org shibbsb3t@buckscoalitions.org
<i>Lead Agency</i>	TODAY, Inc.
<i>Meeting Times</i>	Community Coalition, 2nd Tuesday every other month 8:00 am
<i>Priority Risk Factors</i>	Low Neighborhood Attachment Friends Who Engage in Problem Behaviors Laws and Norms Favorable to Problem Behaviors
<i>Research Based Programs</i>	LifeSkills Training, Across Ages, Olweus Bullying Prevention Program, ATLAS, Guiding Good Choices, Functional Family Therapy, Project ALERT, Supporting School Success, The Incredible Years
<i>Local Innovative Programs</i>	X-SITE (Extreme Service and Intergenerational Training Experience)
<i>Protective Factors Addressed</i>	Bonding to Positive Adults/Peers and the Community, Healthy Beliefs and Clear Standards, Capacity Building to assist in the making of good choices
<i>Mission/Vision Statement</i>	VISION: Building a Better Bensalem Today. Ensuring a Quality Tomorrow MISSION: The mission of Building a Better Bensalem Together is to motivate and organize the community by providing resources and building skills to reduce substance abuse and other adolescent problem behaviors, using proven programs and strategies.

Boyertown Area Communities That Care

<i>Key Contact</i>	Vanessa Sophy, Community Mobilizer
<i>Address</i>	227 North Fifth Street Reading, PA 19601
<i>Phone, Fax</i> <i>E-mail</i>	(610) 376-6988 vsophy@communitypreventionpartnership.org
<i>Lead Agency</i>	Community Prevention Partnership of Berks County
<i>Meeting Times</i>	Scheduled Monthly
<i>Priority Risk Factors</i>	Early and Persistent Antisocial Behavior, Alienation and Rebelliousness, Favorable Parental Attitudes and Involvement in the Problem Behavior
<i>Research Based Programs</i>	
<i>Local Innovative Programs</i>	Pregnant and Parenting Teen Program, Transition to Kindergarten-readiness skills for successful entry to Kindergarten, Pilot Elementary Program-forum to build pro-social skills (ex. teamwork, communication, and problem solving skills), HEARTS (Homework, Enrichment, Arts, Review, Technology, and Safety) After-School Academy
<i>Protective Factors Addressed</i>	Community Opportunities for Pro-Social Involvement, School Opportunities for Pro-Social Involvement
<i>Mission/Vision Statement</i>	The Boyertown Area will continue to be a safe, healthy, accepting, and caring community where every resident will work together to problem solve issues, with the goal of bettering the life of community members. Particularly, our community will place the best interests of its youth as a primary responsibility of each community member.

Bristol Borough Community Partnership

<i>Key Contact</i>	Loretta M. Vasso, M.S., CAC
<i>Address</i>	Kelly Family Center 2 Canal's End Road, Suite 201-G Bristol, PA 19007
<i>Phone, Fax</i> <i>E-mail</i>	215-781-6602, fax 215-781-6611 lvasso@fsabc.org
<i>Lead Agency</i>	Family Service Association of Bucks County
<i>Meeting Times</i>	Every second Wednesday of the month, at 4:30pm, Grundy Library, 680 Radcliffe Street, Bristol
<i>Priority Risk Factors</i>	Community Disorganization/Low Neighborhood Attachment, Family Antisocial Behavior and Parental Attitudes Favorable toward Antisocial Behavior
	Key Issues: Parenting Skills, Teen Activities, Community Resources, School Success, & Goal Setting for Youths
<i>Research Based Programs</i>	Programs Provided by Coalition Partners: Guiding Good Choices, Families and Schools Together (FAST), Olweus Bullying Program, Big Brothers/Big Sisters, Project ALERT
<i>Local Innovative Programs</i>	Latino Leadership Alliance After-School Enrichment Program (w/Lifeskills)
<i>Protective Factors Addressed</i>	Community Rewards for Prosocial Behavior and School Rewards for Prosocial Behavior
<i>Mission/Vision Statement</i>	Bristol Borough Community Partnership is a public/private collaboration committed to fostering positive development for youth and families by reducing substance abuse, violence, delinquency, and school dropout and thereby strengthening our community.

Central Bucks Healthier Community Team

<i>Key Contact</i>	Kimberly Cambra
<i>Address</i>	252 W. Swamp Rd Unit 5 Doylestown, PA 18901
<i>E-mail</i>	kcambra@dh.org
<i>Lead Agency</i>	Central Bucks Healthier Community Team/Doylestown Borough
<i>Meeting Times</i>	Monthly mtgs. private; Action Committees mtgs. public held at various times
<i>Priority Risk Factors</i>	Availability of alcohol, tobacco & other drugs, Favorable attitudes toward problem behavior, Media portrayal of violence, Early initiation of problem behavior, Favorable attitudes toward problem behavior w/ alcohol, tobacco & other drugs, Friends who engage in problem behaviors, Early & persistent antisocial behavior, Academic failure beginning in late elementary school, Lack of commitment to school, Family management problems, Favorable parental attitudes/involvement in problem behavior, Family conflict
<i>Research Based Programs</i>	Guiding Good Choices, Across Ages, Supporting School Success
<i>Local Innovative Programs</i>	Boomerang Youth Recognition Award, Parent Connections, Safe Homes, Peace Week Bucks County, Volunteer Connections, First Night Doylestown, Community Connections
<i>Protective Factors Addressed</i>	Communicating & modeling healthy behaviors through mentoring, Attachment & commitment to families through monthly parent programs targeting risk factors & tips in our monthly newsletter, Community Connections program provides grants to schools, positive social orientation through annual youth summit & youth to community arts events
<i>Mission/Vision Statement</i>	Mission: To serve as the community catalyst in building upon our community assets & strengths by engaging, empowering & linking the various community sectors through programs, resources & activities to create a healthier community; one with positive attitudes, behaviors, & values. Vision: To work as a coalition with community leaders, agencies, businesses, schools & families for the purpose of improving the quality of life in Central Bucks.

Chester County Caring Community Coalition

<i>Key Contact</i>	Nancy Clegg - Community Prevention Outreach Coordinator, John Bakken - CP Director
<i>Address</i>	930 E. Lancaster Avenue Exton, PA 19341
<i>Phone, Fax</i>	610-363-6164 ph 610-594-0278
<i>E-mail</i>	nclegg@coadgroup.com
<i>Lead Agency</i>	The COAD Group
<i>Meeting Times</i>	Quarterly - 4th Friday of the month 9-11:30 - call 610-363-6164
<i>Priority Risk Factors</i>	Covers 6 sites: See www.caringcommunitiescoalition.org Downingtown, Great Valley, Kennett, Octorara, Phoenixville, West Chester
<i>Research Based Programs</i>	15 Countywide - Chester County See www.caringcommunitiescoalition.org
<i>Local Innovative Programs</i>	See www.caringcommunitiescoalition.org
<i>Protective Factors Addressed</i>	See www.caringcommunitiescoalition.org
<i>Mission/Vision Statement</i>	The Chester County Caring Communities Coalition is a web of agencies, individuals, and organizations working to prevent and reduce youth health and behavioral issues including substance abuse, delinquency, teen pregnancy, school drop out and violence, through connecting resources that promote healthy youth and families throughout Chester County.

The Council Rock Coalition For Healthy Youth

<i>Key Contact</i>	Debbie Moskovitz
<i>Address</i>	30 North Chancellor St Newtown, PA 18940
<i>Phone, Fax</i>	(p) 215-944-1006
<i>E-mail</i>	CRCHY@crsd.org
<i>Lead Agency</i>	Northampton Township
<i>Meeting Times</i>	4th Thursday of each month from 4-6pm
<i>Priority Risk Factors</i>	Academic failure beginning in late elementary school, Favorable attitudes toward the problem behavior, Friends who engage in the problem behavior
<i>Research Based Programs</i>	Second Step Pre K - 3rd Grade District-wide, Life Skills Training 4th - 6th Grades District-wide, Project Alert 7th Grade District-wide, Supporting School Success, Guiding Good Choices for Parents, Seven Habits of Highly Effective Teens 7th Grade District-wide
<i>Local Innovative Programs</i>	Co-Pilot Mentoring at both high schools, Inter-generational Homework Center
<i>Protective Factors Addressed</i>	
<i>Mission/Vision Statement</i>	Our Coalition is concerned about the healthy development of our children and is committed to addressing known risk factors and establishing programs that will enable our children to reach their fullest potential.

Delaware County Communities That Care Network

<i>Key Contact</i>	Neilda E. Mott
<i>Address</i>	2600 W. 9th St., Suite GS-100 Chester, PA 19013
<i>Phone, Fax</i>	(p) 610-364-1212
<i>E-mail</i>	nmott@chestereducation.org
<i>Lead Agency</i>	Chester Education Foundation
<i>Meeting Times</i>	2nd Thursday each month, 9-11am
<i>Priority Risk Factors</i>	Low neighborhood attachment and community disorganization, Family history of the problem behavior, Academic failure beginning in late elementary school, Lack of commitment to school, Friends' delinquent behavior, Perceived risk of drug use, Poor family supervision and poor family discipline.
<i>Research Based Programs</i>	Strengthening Families Program, Participate and Learn Skills, Afterschool Tutoring, Second Step: A Violence Prevention Curriculum, Reconnecting Youth, Nurse Family Partnership, Big Brothers/Sisters
<i>Local Innovative Programs</i>	Summer Fun, Recreation, Activities & Camp Calendar; Youth Summit; Healthy Futures; Annual Basket Packing Party; Nonprofit Management Series (Capacity Building Workshops), Social Work Consultation Services; Delco Resource Directory; Needs Indicator Database (Chester Fact and Delaware County Facts); College Without Walls; Chester Youth Collaborative; East Gateway Triangle Project
<i>Protective Factors Addressed</i>	Opportunities, Bonding, Skills, Recognition Healthy Beliefs and Clear Standards;
<i>Mission/Vision Statement</i>	To provide opportunities for children to develop into healthy and productive adults.

Downingtown Area Communities That Care

<i>Key Contact</i>	Community Mobilizer
<i>Address</i>	699 Rice Blvd. Exton, PA 19341
<i>Phone, Fax</i> <i>E-mail</i>	(p) 610-458-9553, (f) 610-458-9071 dtownctc@umly.org
<i>Lead Agency</i>	YMCA of the Upper Main Line
<i>Meeting Times</i>	3rd Tues of month, 12:30-2pm at Lionville Community YMCA
<i>Priority Risk Factors</i>	Favorable parental attitudes and involvement in the problem behavior, Friends who engage in drug and alcohol use, Family management
<i>Research Based Programs</i>	Parenting Wisely, Big Brothers Big Sisters, Lions Quest
<i>Local Innovative Programs</i>	School Resource Officer Program, Parenting Education Campaign, Resource Lending Library
<i>Protective Factors Addressed</i>	School opportunities and rewards for pro-social involvement, Family attachment
<i>Mission/Vision Statement</i>	<p>Mission: Downingtown Area Communities That Care is dedicated to promoting a safe supportive environment for our youth & families through the facilitation of prevention initiatives & activities that engage and unify our community.</p> <p>Vision: Our vision for our community is a place where children are safe, connected to others, encouraged to learn and explore their world, and are supported by a web of concerned adults. Adults in our community will share the responsibility for nurturing, educating and supporting our children.</p>

Great Valley Community Partnership for Healthy Youth (PHY)

<i>Key Contact</i>	Kathy Collier
<i>Address</i>	1416 Berwyn-Paoli Road Berwyn, PA 19312
<i>Phone, Fax</i> <i>E-mail</i>	(p) 610-647-ymca (f) 610-644-7546 gvphy@kennett.net
<i>Lead Agency</i>	YMCA of the Upper Main Line
<i>Meeting Times</i>	3rd Wed of the month, 12-1:30pm
<i>Priority Risk Factors</i>	Favorable parental attitudes and involvement in the problem behavior, Favorable attitudes toward the problem behavior, Family management problems
<i>Research Based Programs</i>	Families That Care: Guiding Good Choices, Media-Wise, Olweus Bullying Prevention
<i>Local Innovative Programs</i>	Youth Focus Group, The Parent Network, PHY-X (A community resource event at the local high school), Shaping Children's Behavior
<i>Protective Factors Addressed</i>	Family Attachment, Family Rewards for Pro-Social Involvement, Community Rewards for Pro-Social Involvement
<i>Mission/Vision Statement</i>	To mobilize the Great Valley community to heighten awareness of risky behaviors and focus on solutions. To bridge community resources and efforts that promote healthy youth and families.

Kennett Area Communities that Care

<i>Key Contact</i>	Patti Olenik
<i>Address</i>	115 South Union Street Kennett Square, PA 19348
<i>Phone, Fax</i>	(p) 610-444-6464 (f) 610-444-7942
<i>E-mail</i>	kennettctc@comcast.net
<i>Lead Agency</i>	Garage Youth Center
<i>Meeting Times</i>	1st Tuesday of each month, 12-1 pm at the Kennett Square Police Station
<i>Priority Risk Factors</i>	Friends who engage in problem behavior, Lack of commitment to school
<i>Research Based Programs</i>	
<i>Local Innovative Programs</i>	Youth Advisory Council, Up with Care Peer Mentoring, Adult/Student Mentoring, Intercambio Spanish/English Exchange, GirlTalk
<i>Protective Factors Addressed</i>	Community opportunities and rewards for pro-social involvement, School opportunities and rewards for pro-social involvement, Bonding to positive adults and peers in the community.
<i>Mission/Vision Statement</i>	Mission: To provide mentoring and leadership development opportunities for the youth of the Kennett Square area. Vision: CTC programs help kids succeed while helping to prevent crime and violence in our community.

Neshaminy Putting Kids First

<i>Key Contact</i>	Kelly Pagliei
<i>Address</i>	1201 Langhorne-Newtown Rd. Langhorne, PA 19047
<i>Phone, Fax</i>	(P) 215-710-5976
<i>E-mail</i>	KPAGLIEI@CHE-EAST.ORG
<i>Lead Agency</i>	St. Mary Medical Center
<i>Meeting Times</i>	2nd Tuesday of the month
<i>Priority Risk Factors</i>	Alcohol, marijuana, & inhalants usage, Community disorganization, Academic failure, Personal transitions/mobility.
<i>Research Based Programs</i>	Connecting With Your Teen, Supporting School Success, Guiding Good Choices, Project Alert, Big Brothers/ Big Sisters
<i>Local Innovative Programs</i>	7 Habits of Highly Effective Teens, Teen to Youth Mentoring
<i>Protective Factors Addressed</i>	
<i>Mission/Vision Statement</i>	We are dedicated to supporting community efforts to nurture and raise children and teens in a safe, caring, drug-free environment, with the goal of encouraging children to make healthy life style choices & empowering them to make a difference in their communities. This will be achieved by engaging in a community-wide effort to reduce substance abuse and violence through programs, services, and activities directed toward the youth of the community.

Norristown Communities That Care for Youth

<i>Key Contact</i>	Angela Bell, Community Mobilizer
<i>Address</i>	3125 Ridge Pike Eagleville, PA. 19403
<i>Phone, Fax</i>	(p) 610-630-2111 (f) 610-630-4003
<i>E-mail</i>	Abell@fsmontco.org
<i>Web</i>	www.norristownctc.org
<i>Lead Agency</i>	Family Services
<i>Meeting Times</i>	Full Board Meetings 2nd Tuesday at 6:00 p.m. in January, April, July and October. Steering Committee meetings 6x per year. For Meeting dates and locations please use www.norristownctc.org
<i>Priority Risk Factors</i>	Availability of drugs/firearms, Family management, Lack of commitment to school, Favorable attitudes toward problem behavior
<i>Research Based Programs</i>	Life Skills Training, Guiding Good Choices, Staying Connected With Your Teen , Brief Strategic Family Therapy
<i>Local Innovative Programs</i>	Norristown Police Department (NPD) Truancy Abatement Initiative, NPD Out of Harm's Way Initiative, social marketing campaign: Find Your 25th Hour
<i>Protective Factors Addressed</i>	Opportunities for pro-social engagement, Skills to make positive behavioral choices, Bonding (Attachment and Commitment), Healthy Beliefs and Clear Standards
<i>Mission/Vision Statement</i>	Norristown Area Communities That Care For Youth (CTC) brings together community residents and leaders to prevent substance use and violence in order to secure a more safe, caring and educated environment in which youth can live and grow to be productive members of our community.

Northampton County Communities That Care

<i>Key Contact</i>	Margaret O. Magee
<i>Address</i>	320 Ferry Street Easton, PA 18042
<i>Phone, Fax</i>	(p) 610-258-4361 (f) 610-258-2198
<i>E-mail</i>	mmagee@projecteaston.org
<i>Lead Agency</i>	ProJeCt of Easton, Inc.
<i>Meeting Times</i>	varied
<i>Priority Risk Factors</i>	Early initiation of the problem behavior, Family management problems
<i>Research Based Programs</i>	Adopt-A-Class (mentoring, tutoring and leadership program for the Class of 2007 in Easton Area School District)
<i>Local Innovative Programs</i>	
<i>Protective Factors Addressed</i>	Caring school climate, Succeeding in school, other adult relationships
<i>Mission/Vision Statement</i>	Vision: All citizens of our community will share the responsibility for nurturing, educating & supporting our children, thus creating a place where all are safe, connected to others and encouraged to learn.

Octorara Communities That Care

<i>Key Contact</i>	Danielle Salada
<i>Address</i>	3095 Limestone Rd., Suite 4 Cochranville PA 19330
<i>Phone, Fax</i>	(p) 610-593-9622 ext. 443 (f) 610-593-2920
<i>E-mail</i>	dsalada@ymcabwv.org
<i>Website</i>	www.ymcabwv.org
<i>Lead Agency</i>	Octorara YMCA
<i>Meeting Times</i>	Last Wed of every other month at 9:30 am in the West Fallowfield Community Center, Room 1
<i>Priority Risk Factors</i>	Lack of commitment to school, Early initiation of the problem behavior, Family domain, Friends who engage in problem behaviors
<i>Research Based Programs</i>	Across Ages, Olweus Bullying Prevention Program, Project ALERT, Big Brothers & Big Sisters school & community-based programs
<i>Local Innovative Programs</i>	Best Buddies program, Heroes mentoring program, Middle & High School SADD Chapters, Family Fun nights
<i>Protective Factors Addressed</i>	Healthy beliefs and clear standards, School opportunities and rewards for pro-social involvement
<i>Mission/Vision Statement</i>	Our goal is to bring assistance and support to all area residents, students, and families. Our most important task is to unite the community, bringing people from different walks of life together to discuss their goals and visions for the Octorara Community, and take the steps to realize these goals. Our vision is a united community that provides healthy standards and beliefs, knowledge, skills, opportunity and recognition to all youth.

Pennsbury LYFT: A Community of Promise

<i>Key Contact</i>	Lizette Morales - Chomicki, Project Coordinator
<i>Address</i>	c/o United Way of Bucks County 413 Hood Boulevard Fairless Hills, PA 19030
<i>Phone, Fax</i>	(215) 949-1660, ext. 104, Fax (215) 949-0373
<i>E-mail</i>	
<i>Website</i>	
<i>Lead Agency</i>	Pennsbury School District
<i>Meeting Times</i>	4th Thursday every other month at 8:30am
<i>Priority Risk Factors</i>	Academic Failure in Late Elementary School, Availability of ATOD, Friends Who Engage in Problem Behaviors, Favorable Attitudes Toward Problem Behavior
<i>Research Based Programs</i>	Guiding Good Choices, Supporting School Success, Project ALERT, ATLAS, DARE
<i>Local Innovative Programs</i>	Big Brothers Big Sisters structured in-school Mentoring Program, Respecting Differences Bullying Prevention Program
<i>Protective Factors Addressed</i>	Coordinate ATOD policies across all four domains- school, family, community and individual/peer; Develop, identify and implement programs, services, and activities targeting substance abuse that promote healthy behaviors in our youth.
<i>Mission/Vision Statement</i>	Vision: Working together to create a better future for a healthy Pennsbury community. Mission: Bring together community leaders and organizations, local businesses, schools, law enforcement, communities of faith, and residents to minimize risk taking behavior and maximizing access to prevention education opportunities and resources to assist youth and families.

Phoenixville Communities That Care

<i>Key Contact</i>	Dolores Winston
<i>Address</i>	123 Main Street Phoenixville, PA 19460
<i>Phone, Fax</i>	(p) 610-917-9675, (f) 610-933-7729
<i>E-mail</i>	Phxctc@yahoo.com
<i>Lead Agency</i>	Phoenixville Area Positive Alternatives (PAPA)
<i>Meeting Times</i>	2nd Wed. every other month Sept.-June No meetings in July & Aug.
<i>Priority Risk Factors</i>	Favorable parental attitudes and family management problems, Early Initiation of problem behavior, Community laws and norms and availability of drugs, Early and persistent antisocial behavior, Favorable attitudes toward the problem behavior
<i>Research Based Programs</i>	Second Step, Structured Playground Program, Foundations of Fatherhood (National Program), Parents Who Care
<i>Local Innovative Programs</i>	Parent/Child Activities (Family Night Out), Fatherhood Initiative (Annual Fatherhood Reunion Picnic), Father of the Month Award Program, Structured Summer Playground Camp Program
<i>Protective Factors Addressed</i>	Parent/Child Activities, Community Mobilization, Fatherhood Initiative, Structured Playground Program
<i>Mission/Vision Statement</i>	Mission: Phoenixville Area CTC is a collaborative effort involving individuals and organizations who are committed to building the community's capacity to meet the needs of our children and their families, so that our children will adopt safe and healthy behaviors and be successful at home, in school and in the larger community.

Reading Communities That Care

<i>Key Contact</i>	Yvonne L. Stroman
<i>Address</i>	227 N. 5th Street Reading, PA 19601
<i>Phone, Fax</i>	(p) 610-376-6988 (f) 610-376-7384
<i>E-mail</i>	ystroman@communitypreventionpartnership.org
<i>Lead Agency</i>	Community Prevention Partnership of Berks County
<i>Meeting Times</i>	1st Wednesday of the Month at 12:00noon
<i>Priority Risk Factors</i>	Easy availability of alcohol, tobacco, and other drugs, Transition and Mobility, Family Management, Truancy, High School Drop Out
<i>Research Based Programs</i>	Nurse Family Partnership, Olweus Bullying Prevention Program, PREP-Prevention & Relationship Enhancement Program, Creating Lasting Family Connections
<i>Local Innovative Programs</i>	Lauer's Park Vestibule Program, Y.E.S. Mentoring Program
<i>Protective Factors Addressed</i>	After School Programs
<i>Mission/Vision Statement</i>	Reading will become a community where our children are viewed as our most valuable asset and where they are cared for by open-minded, hard working and responsible adults and rearing our children in a safe and healthy environment.

Slate Belt Communities That Care

<i>Key Contact</i>	Michele Connelly
<i>Address</i>	123 Five Points Richmond Road Bangor, PA 18013
<i>Phone, Fax</i>	(p) 610-588-2163, ext. 8835
<i>E-mail</i>	connellm@bnet1.bangorsd.org
<i>Lead Agency</i>	Borough of Pen Argyl
<i>Meeting Times</i>	Prevention Board 2nd Tues of the month 9:30am, committees vary
<i>Priority Risk Factors</i>	Early initiation of the problem behavior, Family history of the problem behavior, Favorable parental attitudes and involvement in the problem behavior, Friends who engage in the problem behavior, Lack of commitment to school and academic failure
<i>Research Based Programs</i>	Across Ages, Preparing for School Success, Guiding Good Choices, Youth Matters
<i>Local Innovative Programs</i>	Coordinated School Health, Suicide and Violence Prevention
<i>Protective Factors Addressed</i>	All
<i>Mission/Vision Statement</i>	The Slate Belt will be a community where all children can reside in an atmosphere of care and safety.

Upper Bucks Healthy Communities Healthy Youth Coalition

<i>Key Contact</i>	Lee Rush
<i>Address</i>	PO Box 258 Quakertown, PA 18951
<i>Phone, Fax</i>	(p) 215-538-4796, (f) 215-538-4798
<i>E-mail</i>	lrush@enter.net
<i>Lead Agency</i>	justCommunity, Inc.
<i>Meeting Times</i>	The 4th Wednesday of each month at 3:00 PM
<i>Priority Risk Factors</i>	Perceived academic failure, Favorable parental attitudes toward problem behavior, Constitutional factors (impulsiveness and sensation seeking), Lack of commitment to school, Friends who engage in problem behavior
<i>Research Based Programs</i>	Guiding Good Choices, BIGS- Big Brothers/Big Sisters, Mentoring After School, LifeSkills, Project ALERT, Community Accountability Circles-Restorative Justice, Supporting School Success, Social Norms Marketing Campaign
<i>Local Innovative Programs</i>	School-based Asset Building Clubs, After-School Homework club, Safe Homes Directory, All 40 Assets
<i>Protective Factors Addressed</i>	All
<i>Mission/Vision Statement</i>	Promote positive youth development by providing information, supporting programs and strengthening community relationships that build assets to help youth stay healthy, safe and drug-free.

West Chester Area Communities That Care

<i>Key Contact</i>	Christina Valocchi
<i>Address</i>	252 E. Market St. #158 West Chester, PA 19382
<i>Phone, Fax</i>	(p) 610-696-8262 (f) 610-696-8261
<i>E-mail</i>	mobilizer@wcctc.org
<i>Lead Agency</i>	West Chester Area School District
<i>Meeting Times</i>	2nd Wednesday each month 12 noon - 1:30 P.M.
<i>Priority Risk Factors</i>	Favorable Parental Attitudes Towards the Problem Behavior and Family Management Problems; Early Initiation of the Problem Behavior; Community Laws and Norms and Availability of drugs.
<i>Research Based Programs</i>	Parenting Wisely, Grandparenting Wisely, Life Skills, Lions Quest
<i>Local Innovative Programs</i>	Youth Leadership Initiative, Girls Leadership, SADD Chapter
<i>Protective Factors Addressed</i>	School Rewards for Prosocial Involvement
<i>Mission/Vision Statement</i>	<p>Vision Statement: West Chester Area CTC is creating a safe and affirming community where risks to children and youth are minimized through on-going, broad-based community wide collaboration and commitment.</p> <p>Mission Statement: West Chester Area CTC is a community-based collaborative of individuals, families and organizations who are committed to meeting the needs of our children and youth. Recognizing the potential for all children to be “at risk”, our mission is to reduce that potential risk by providing prevention and intervention resources, promoting positive parenting, and committing to educating families in a way that ensures a safe, supportive and nurturing community.</p>

WISE-CTC (Warminster, Ivyland, Southampton Embracing Communities That Care)

<i>Key Contact</i>	Barbara Dietsch
<i>Address</i>	21 Beechwood Drive Huntingdon Valley, PA 19006
<i>Phone, Fax</i>	(p) 215-773-9796
<i>E-mail</i>	WISE-CTC@quadnet.net
<i>Lead Agency</i>	Warminster Township
<i>Meeting Times</i>	2nd Wednesday of each month, 4:30 PM
<i>Priority Risk Factors</i>	Availability of drugs, Poor family management, Academic failure
<i>Research Based Programs</i>	Project Northland, Guiding Good Choices, 40 Developmental Assets, BB/BS Elementary School mentoring
<i>Local Innovative Programs</i>	Building Character as a Family, Providing transportation to ESL Library Program and after school tutoring, implementation of new programs through the Family Center
<i>Protective Factors Addressed</i>	Religiosity, Family Opportunities for Pro-social Involvement
<i>Mission/Vision Statement</i>	We envision safe and healthy children growing up in a loving, accepting community surrounded by productive, giving, caring adults who promote health in body, mind and spirit while inspiring the children to continue the cycle.

Wilson Communities That Care

<i>Key Contact</i>	Vanessa Sophy, Community Mobilizer
<i>Address</i>	227 N. 5th Street Reading, PA 19601
<i>Phone, Fax</i>	(p) 610-376-6988 (f) 610-376-7384
<i>E-mail</i>	vsophy@communitypreventionpartnership.org
<i>Lead Agency</i>	Community Prevention Partnership of Berks County
<i>Meeting Times</i>	3rd Thursday of the month, Noon-1 p.m.
<i>Priority Risk Factors</i>	Low Neighborhood Attachment, Laws and Norms Favorable to Drug Use and Handguns, Personal Transitions and Mobility, Lack of Commitment to School, Favorable Attitudes toward Antisocial Behavior
<i>Research Based Programs</i>	Mentor Connection, SMILE Mentoring Program, Active Parenting for Teens, Active Parenting Now, Preparing for School Success
<i>Local Innovative Programs</i>	Parent Empowerment Seminars, High School Talent Show and Silent Art Auction, Attendance Rewards Program, Family and Youth Events
<i>Protective Factors Addressed</i>	Social Skills, Religiosity, School Opportunities for Pro-social Involvement
<i>Mission/Vision Statement</i>	Every child will be supported, encouraged, chal- lenged and loved through access to a moral and emotionally grounded adult while living in a stable community focused on a healthy future.

Produced by:

**Pennsylvania Southeast Region of
Communities That Care**

Christina Cosgrove
Pennsylvania Commission on Crime and Delinquency
Office of Juvenile Justice and Delinquency Prevention
3101 North Front Street
Harrisburg, PA 17110
Phone: 717-265-8478
ccosgrove@state.pa.us

and

Brian Bumbarger
Penn State EPISCenter
206 Towers Building
University Park, PA 16802
Phone: 814-863-2568
Fax: 814-865-3936
EPISCenter@psu.edu